

Emergency & Fire Evacuation Procedures

Kalamunda History Village

Located between WILLIAMS St and RAILWAY Rd - Nearest intersection is SPRING Rd.

EMERGENCY PHONE NUMBER - Fire, Ambulance, Police: 000

1. GENERAL RESPONSIBILITIES

Take note of position of exits, fire extinguishers, first aid facilities and outdoor assembly points (verge side Williams Street to one side of gate entry) shown on the evacuation plan and also displayed on walls throughout the village buildings. *Note how many persons are under your supervision.*

2. EMERGENCY PROCEDURES – IN CASE OF FIRE / EXPLOSION

- There is no alarm built into the Kalamunda History Village, should an emergency arise, if it is possible, please notify History Village staff (only if safe to do so).
- Count your group and then evacuate the History Village by the nearest safe exit. Main gate or alternative gates located at either end of the History Village.
- Assemble outdoors (verge side Williams Street to one side of entry gate)
- Conduct head count (ie. try to account for everyone)
- Do not re-enter the village area.
- Do not attempt to fight fire.
- Always follow the instructions given from the History Village staff.

3. OTHER EMERGENCIES - Contact appropriate Emergency service:

- Police, Fire, Ambulance (life threatening) 000
- Police Communications (non urgent) 131 444
- SES Rescue 132500

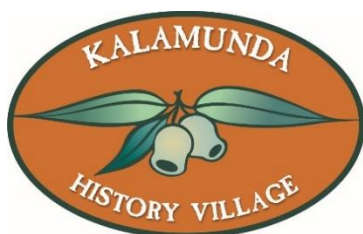
Attend to any injured persons on site; call an ambulance if required.

In case of an **Earthquake** or **Severe storm** (cyclone):

- Stay indoors.
- Take shelter – under tables, doorway, etc.
- Wait for the situation to pass.

In case of a **Bushfire** or **Lightning** in the area:

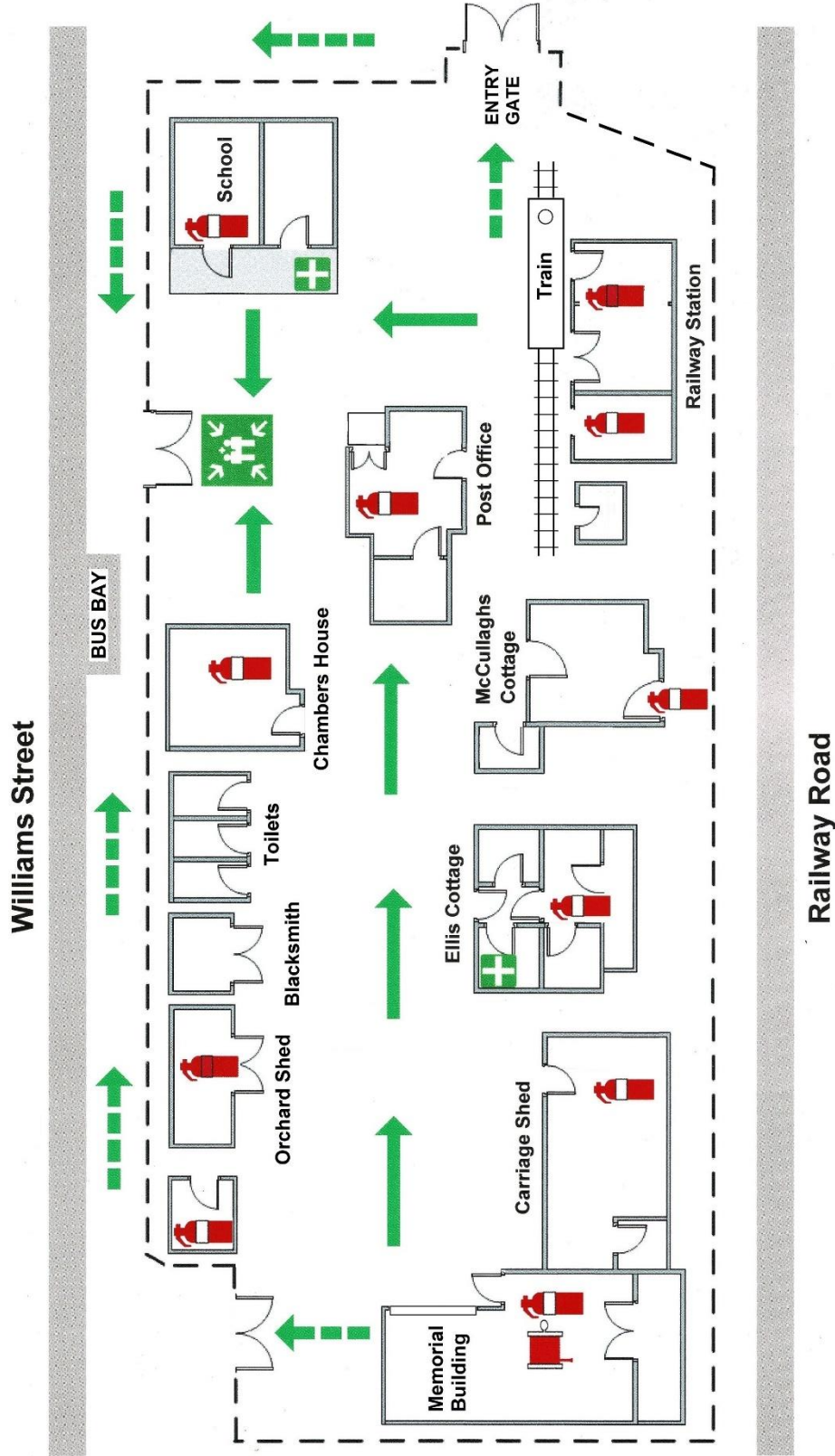
- Stay indoors.
- Wait for the situation to pass.
- Do not leave the building unless instructed by the History Village staff.





Evacuation Diagram

History Village
56 Railway Road
Kalamunda



Not to Scale Emergency Egress Only

EMERGENCY INFORMATION

- In case of emergency contact:
- **Police, Fire or Ambulance (life threatening)** 000
 - **Police (non-urgent)** 131 444
 - **SES** 132 500
- When directed by your Warden:
- Evacuate the building via the nearest safe exit
 - Proceed to the assembly area, or as directed by your Warden or Emergency Services
 - Remain at the assembly area until directed by your Warden or Emergency Services
- Do not re-enter the building until instructed by your Warden or Emergency Services.

Legend

	Powder extinguisher
	Water extinguisher
	Hose Reel
	First aid kit
	Assembly Area
	Path of Travel
	Alternate Path of Travel